

New England Impressions

Aquarelle and Oil Paintings
by Hans K. F. Klunder

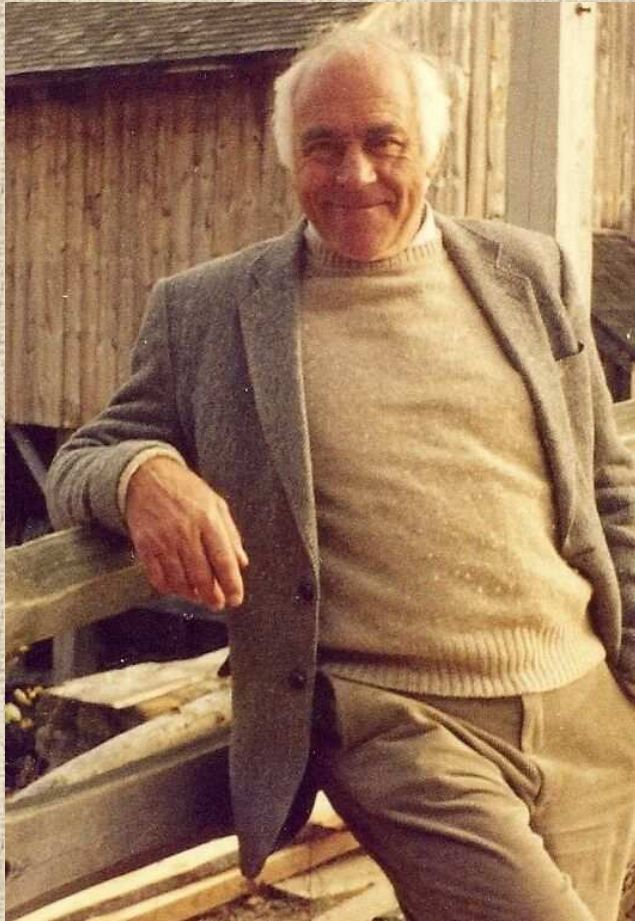
The background of the slide is a soft watercolor illustration. It features several tall, dark green evergreen trees on the right side. On the left and bottom, there are lighter, more abstract washes of color in shades of blue, yellow, and orange, suggesting a landscape with fields or other vegetation. The overall style is artistic and gentle.

Welcome to Hans' Art Gallery

Hans captures the beauty and charm of northern New England Scenery in his paintings.

A beauty some of which is not existent any longer, e.g. windblown barns and old covered bridges, but will prevail in his paintings.

Hans Klunder



- born in Germany, Hans came to the U.S.A. on a Fullbright scholarship
- graduated from Harvard University in 1957
- professional career as City Planning Consultant mostly based in Hanover, New Hampshire

- after his retirement, Hans took up painting seriously
- studied his technique in aquarelle and oil with Danielle Clément, professional artist, Quebec
- Hans has always enjoyed the outdoors, hiking, skiing and hunting
- active member of CRAG – Connecticut River Artist Group
- his domicile is in Norton, Vermont, although Hans joins his wife Inge and her two children frequently in Stuttgart, Germany

- A Fisherman's Shack
- New Brunswick Harbour Scene
- Swampy Bay
- Barnet Covered Bridge
- Sid Hayward Ledge
- Beaverbrook Falls
- Old Homestead on the Lake

Let us go on a virtual tour
to enjoy the charms of
New England Impressions
by Hans Klunder

A Fisherman's Shack





■ A Fisherman's Shack

■ New Brunswick Harbour Scene

■ Swampy Bay

■ Barnet Covered Bridge

■ Sid Hayward Ledge

■ Beaverbrook Falls

■ Old Homestead on the Lake

A Fisherman's Shack

Aquarelle 12" x 18"

The often dangerous work of fishermen, exposed to storms and flood, and their weather-beaten shacks on the coast of Maine has inspired Hans to this painting.

New Brunswick Harbour Scene





- A Fisherman's Shack

- New Brunswick Harbour Scene

- Swampy Bay

- Barnet Covered Bridge

- Sid Hayward Ledge

- Beaverbrook Falls

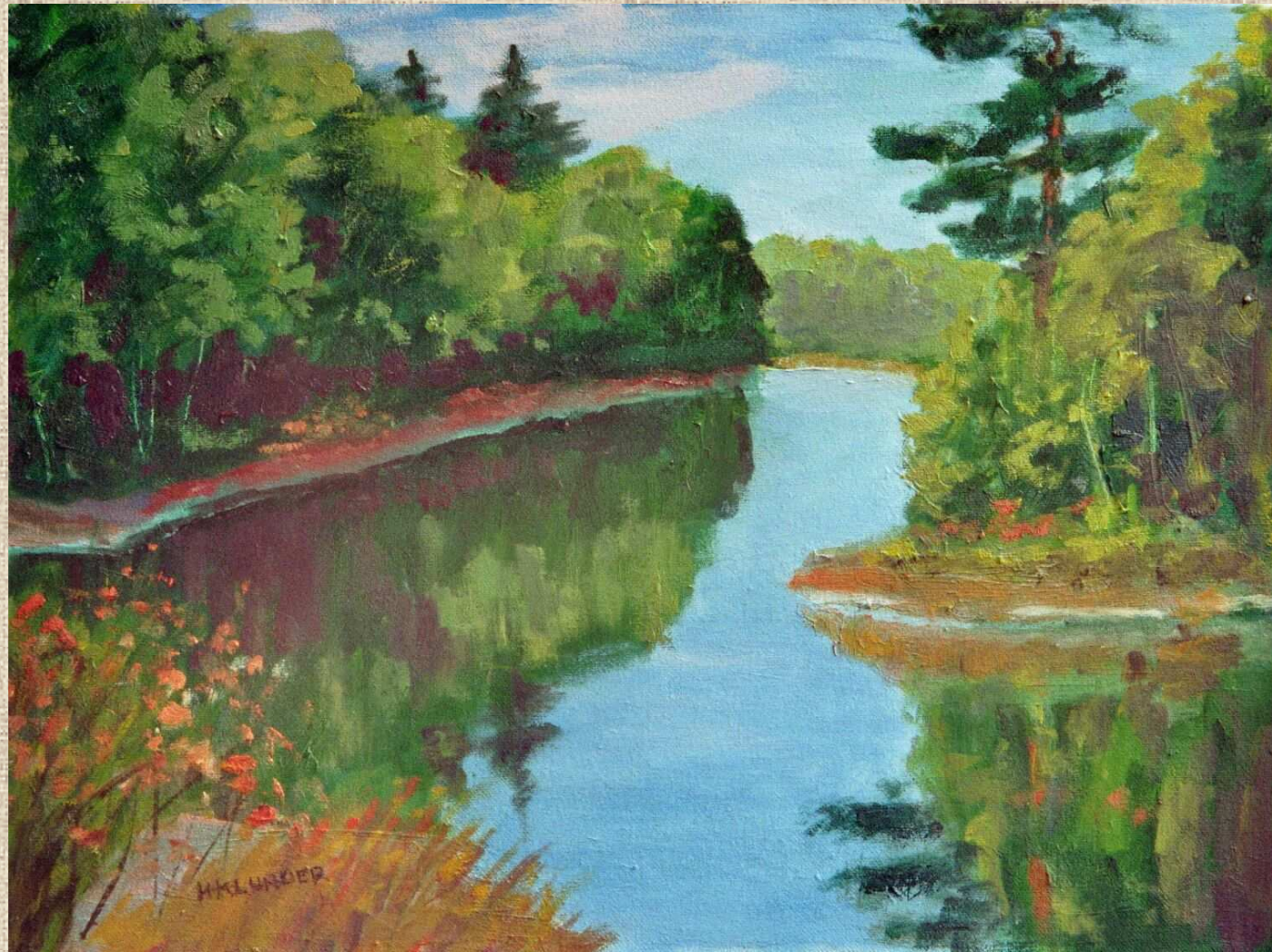
- Old Homestead on the Lake

New Brunswick Harbour Scene

Aquarelle 22" x 34"

Almost like the shore in Maine, this little fisher village was painted in New Brunswick late in summer.

Swampy Bay



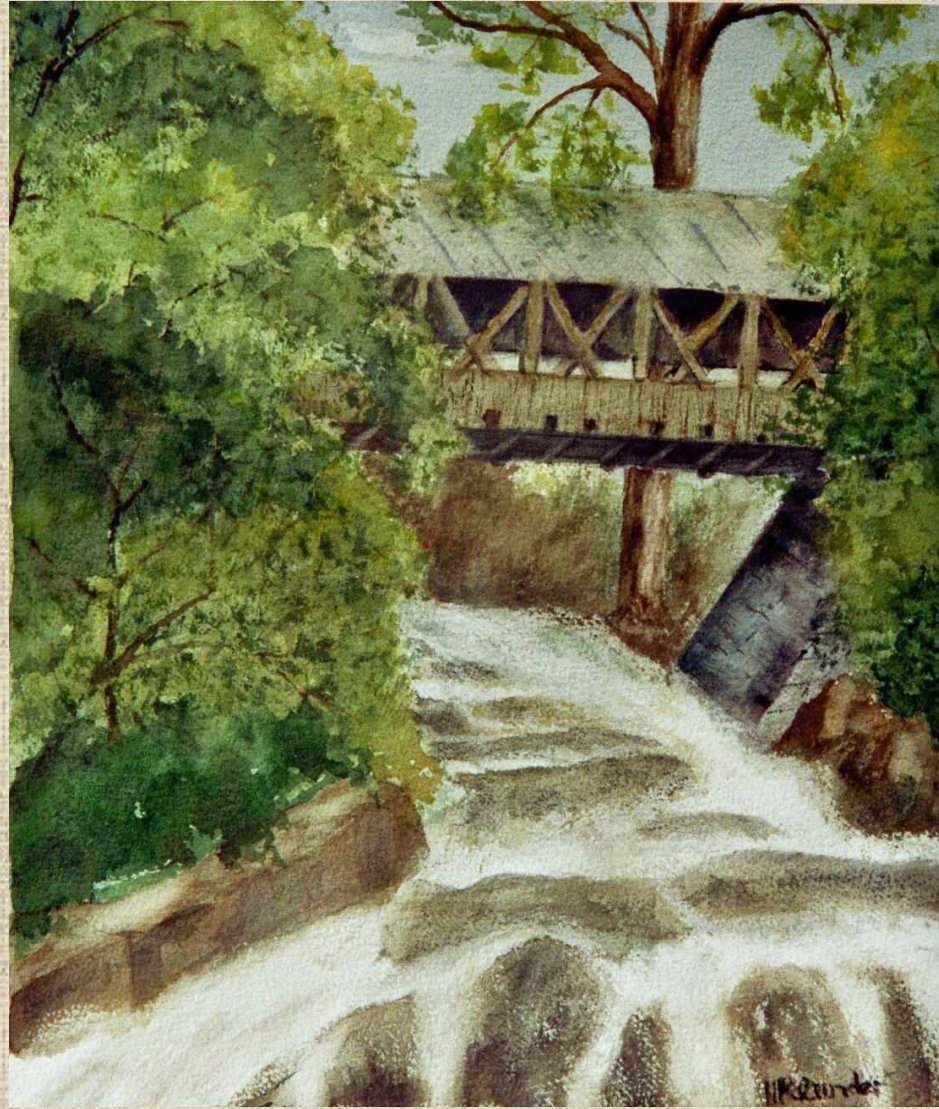
- 
- A Fisherman's Shack
 - New Brunswick Harbour Scene
 - Swampy Bay
 - Barnet Covered Bridge
 - Sid Hayward Ledge
 - Beaverbrook Falls
 - Old Homestead on the Lake

Swampy Bay

Oil on Canvas 12" x 16"

This very spot, located at the eastend of the Lake of Many Bays, shows one of the flood plains of the tributaries that form that large waterbody and its many scenic little coves.

Barnet Covered Bridge



- 
- A Fisherman's Shack
 - New Brunswick Harbour Scene
 - Swampy Bay
 - Barnet Covered Bridge
 - Sid Hayward Ledge
 - Beaverbrook Falls
 - Old Homestead on the Lake

Barnet Covered Bridge

Aquarelle 14" x 16"

This combination of a covered bridge and a river plunging over the rocks was quite an irresistible motif. Alas, this wooden structure in Barnet, Vermont, was replaced by a concrete one.

Sid Hayward Ledge



- 
- New Brunswick Harbour Scene
 - Swampy Bay
 - Barnet Covered Bridge
 - Sid Hayward Ledge
 - Beaverbrook Falls
 - Old Homestead on the Lake
 - Paquetteville

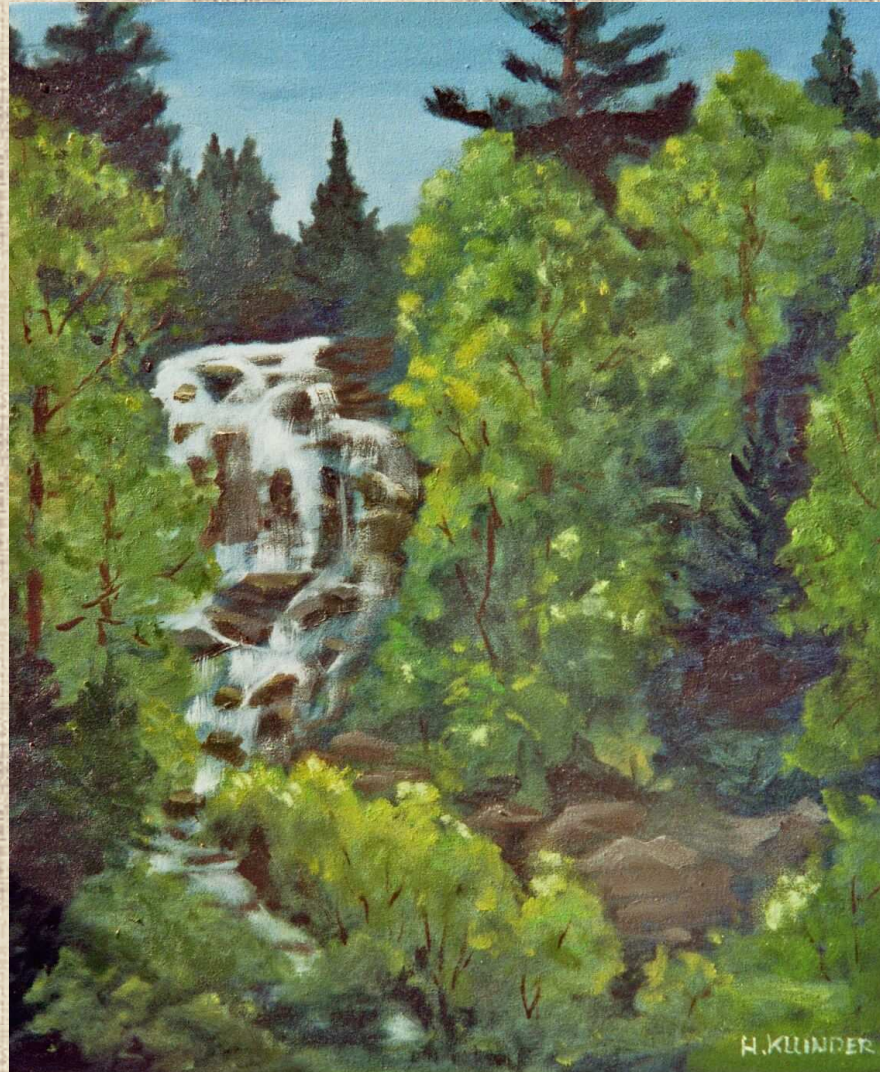
Sid Hayward Ledge

Oil on Canvas 14" x 20"

A favorite spot for fly-fishing in the 2nd College Grant by Sid Hayward, a former treasurer of Dartmouth College.

Hans too loves to hunt and hike in the Grant.

Beaverbrook Falls



The background is a soft-focus oil painting of a lush forest. In the center, a waterfall cascades down a rocky ledge into a pool of water. The surrounding trees are dense, with green and yellow foliage, suggesting a midsummer or early autumn setting. The overall tone is peaceful and scenic.

Beaverbrook Falls

Oil on Canvas 16" x 20"

- Swampy Bay
- Barnet Covered Bridge
- Sid Hayward Ledge
- Beaverbrook Falls
- Old Homestead on the Lake
- Paquetteville
- Autumn Splendor

This midsummer scene presents a spectacular view of the Beaverbrook Falls near Colebrook, New Hampshire. Sometimes just a trickle of water and here showing the cascading flow of an earlier rainstorm.

H. KLINDER

Old Homestead on the Lake



- 
- Swampy Bay
 - Barnet Covered Bridge
 - Sid Hayward Ledge
 - Beaverbrook Falls
 - Old Homestead on the Lake
 - Paquetteville
 - Autumn Splendor
 - Red Autumn Bloom

Old Homestead on the Lake

Oil on Canvas 15" x 20"

A beautiful view of an old homestead near bottomless Lake Willoughby, the deepest water in Vermont. The sharp blues and greens are at summer's height in Vermont.

Paquetteville



- 
- The background is an oil painting of a scenic village nestled in the foothills north of the Vermont border. The painting shows a winding road through green fields, a small white church with a steeple, and a convent. The hills are covered in lush greenery, and the sky is a soft, hazy blue. The overall style is impressionistic, with visible brushstrokes and a warm, golden light.
- Barnet Covered Bridge
 - Sid Hayward Ledge
 - Beaverbrook Falls
 - Old Homestead on the Lake
 - Paquetteville
 - Autumn Splendor
 - Red Autumn Bloom
 - Columbia Bridge

Paquetteville

Oil on Canvas 16" x 20"

A scenic village nestled in the provincial foothills north of the Vermont border. It was painted on location depicting the village church with its convent on a late summer morning.

Autumn Splendor



- 
- Beaverbrook Falls
 - Old Homestead
on the Lake
 - Paquetteville
 - Autumn Splendor
 - Red Autumn
Bloom
 - Columbia Bridge
 - A Barn in Winter
 - Winter Woods

Autumn Splendor

Aquarelle 13" x 15"

Autumn climaxes in breathtaking, luminous splendor in the picturesque village of Burke Hollow in Vermont.

J. Klumke

Red Autumn Bloom



- 
- Old Homestead on the Lake
 - Paquetteville
 - Autumn Splendor
 - Red Autumn Bloom
 - Columbia Bridge
 - A Barn in Winter
 - Winter Woods
 - Winter Farming

Red Autumn Bloom

Aquarelle 10" x 15"

A New England Sugar Maple tree turned into a flaming gold and crimson bloom on a beautiful Indian Summer day.

Columbia Bridge



- 
- Paquetteville
 - Autumn Splendor
 - Red Autumn Bloom
 - Columbia Bridge
 - A Barn in Winter
 - Winter Woods
 - Winter Farming
 - Winter Solstice

Columbia Bridge

Aquarelle 14" x 18"

This aquarelle shows a charming Indian-Summer Scene of a covered bridge surrounded by the gleaming, bright fall colors.

The bridge is crossing the Connecticut River south of Colebrook, New Hampshire.

WILLINDER

A Barn in Winter



- 
- Autumn Splendor
 - Red Autumn Bloom
 - Columbia Bridge
 - A Barn in Winter
 - Winter Woods
 - Winter Farming
 - Winter Solstice
 - The Painter's Home in the Season

A Barn in Winter

Aquarelle 10" x 14"

A working farm still shows the use of the silo and the attached "young-vieh" shed. The scene is reminiscent of the many family farms so typical in Vermont in years gone-bye.

Winter Woods





Winter Woods

Aquarelle 14" x 16"

This scene was photographed during a snowshoeing venture near the painter's home and later transferred into this wintery aquarelle.

A typical landscape of the Essex Mountains in the North-east Kingdom of Vermont.

- Autumn Splendor
- Red Autumn Bloom
- Columbia Bridge
- A Barn in Winter
- Winter Woods
- Winter Farming
- Winter Solstice
- The Painter's Home in the Season

Winter Farming



- Autumn Splendor
- Red Autumn Bloom
- Columbia Bridge
- A Barn in Winter
- Winter Woods
- Winter Farming
- Winter Solstice
- The Painter's Home in the Season

Winter Farming

Aquarelle 14" x 18"

Winter farming in Southern Quebec looking so picturesque to outside onlookers but shows truly the hard work for the owners and field hands. No wonder that this particular farm has since fallen prey to neglect and is no longer there.

Winter Solstice



- 
- Autumn Splendor
 - Red Autumn Bloom
 - Columbia Bridge
 - A Barn in Winter
 - Winter Woods
 - Winter Farming
 - Winter Solstice
 - The Painter's Home in the Season

Winter Solstice

Aquarelle 11" x 15"

Anywhere in a New England village on a crisp winter evening. Doesn't it make you want to sit in a cosy chair next to a lit fire place? Or you might think of going on an evening walk like Robert Frost in his poem "Good Hours" ...

The Painter's Home in Season



- 
- Autumn Splendor
 - Red Autumn Bloom
 - Columbia Bridge
 - A Barn in Winter
 - Winter Woods
 - Winter Farming
 - Winter Solstice
 - The Painter's Home in the Season

The Painter's Home in Season

Aquarelle 11" x 25"

Hans' place during the Season,
deeply snowed in, peaceful and
quiet.

Waiting for Santa's sleigh?

Impressum

Copyright by Hans K. F. Klunder

P. O. Box 112

Norton, Vt. 05907

☎ 1-802-822-5632

All rights reserved. No part of this presentation may be reproduced or copied without written permission of the artist Hans K. F. Klunder.

New England Impressions

Designed by Inge Klünder, Germany, 2008